

VIDEO CONTENT ANALYTICS

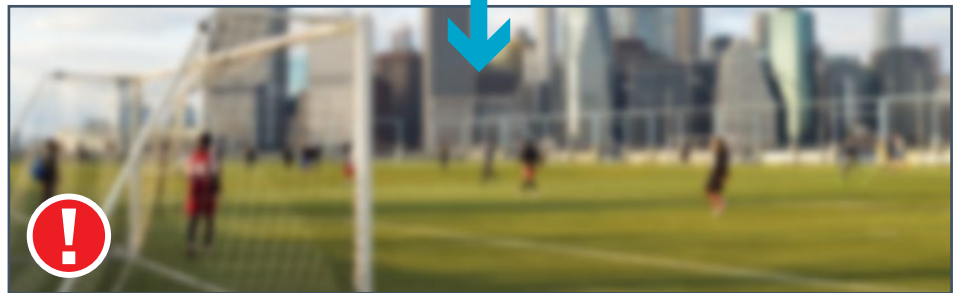
Defocus Detection



The Defocus Detection feature enables you to sense a change of environment affected by external factors. The camera recognizes when a defocus event occurs, and can be set to sound an alarm or send a notification whenever image blur occurs.

Defocus may be caused by:

- Lens cover is dirty or dusty
- Weather-related events (snow, rain, fog, etc.) are interfering with proper focusing of the camera
- Vandalism or intentional rotation of the camera or lens
- Intentional obstruction of field of view with an object or substance (paint, tape, etc.)
- Accidental obstruction of field of view by a tree branch or stray item blowing in the wind



Applications

- ↘ Airports
- ↘ Banks
- ↘ Car Parks
- ↘ Childcare Facilities
- ↘ Construction Sites
- ↘ Correctional Facilities
- ↘ Home Porches / Decks
- ↘ Parking Lots
- ↘ Schools
- ↘ Transit Stations
- ↘ ...and more

Features & Benefits:*

- Easily configure Defocus Detection to set up a schedule for when the camera senses for loss of image sharpness
- Adjustable camera sensitivity allows you to set the Defocus Detection sensitivity (range: 1 to 100), to prevent false alarms and/or event triggers
- The VCA Search feature saves time by allowing you to quickly find, review and download video of Defocus Detection events
- The Video Playback feature allows you to easily review and analyze Defocus Detection events

**Alibi DVRs, NVRs and IP cameras can perform Defocus Detection analysis*