



VIGILANT PERFORMANCE SERIES



## ALIBI VIGILANT PERFORMANCE SERIES STARLIGHT SMARTSENSE 8MP IP CABLE-FREE FIXED MINI DOME CAMERA

### Key Specifications:

- + 8MP IP dome camera
- + 2.8mm lens
- + 101.1 degrees Field of View
- + 98 feet Smart IR Distance
- + microSD card slot supports up to 256GB
- + Built-in mic & Audio-Alarm I/O
- + Ultra H.265
- + 120dB WDR
- + ANR Network Storage
- + Cable-Free
- + NDAA compliant

The Alibi Vigilant Performance Series Camera, 8MP IP Cable-Free Fixed Mini Dome Security Camera delivers crisp video day or night.

This product has been specifically designed and manufactured to comply with the latest technical requirements specified under NDAA regulations.

- + **Multi-Megapixel Resolution Video** – 8MP camera captures a high level of clarity and detail for most applications
- + **3D Digital Noise Reduction (DNR)** – Get exceptional video image quality with less noise. 3D Digital Noise Reduction (3D-DNR). 3D-DNR incorporates frame-to-frame noise reduction with spatial noise reduction to produce clear video images with less noise in low light conditions.



**Precision Security Specialist**  
3306070265  
<http://PSS.alibidealer.com>

# SPECIFICATIONS

## CAMERA

|                      |   |
|----------------------|---|
| Sensor               | 1/2.7", 4.0 megapixel, progressive scan, CMOS           |
| Minimum Illumination | Colour: 0.002 lux (F1.6, AGC ON)<br>0 lux with IR       |
| Day/Night            | IR-cut filter with auto switch (ICR)                    |
| Shutter              | Auto/Manual, 1 - 1/100000s                              |
| Angle Adjustment     | Pan: 0° - 348°<br>Tilt: -66° - 66°<br>Rotate: 0° - 346° |
| WDR                  | 120dB   |
| S/N                  | >52dB   |

## LENS

|                   |            |
|-------------------|------------|
| Lens type         | 2.8mm@F1.6 |
| Iris              | Fixed      |
| Field of View (H) | 101.1°     |
| Field of View (V) | 55.3°      |
| Field of View (D) | 111.1°     |

## DORI

|               |      |
|---------------|------|
| Lens (mm)     | 2.8  |
| Detect (m)    | 63.0 |
| Observe (m)   | 25.2 |
| Recognize (m) | 12.6 |
| Identify (m)  | 6.3  |

## VIDEO

|                    |  |
|--------------------|--|
| Video Compression  | Ultra 265, H.265, H.264, MJPEG   |
| H.264 code profile | Baseline profile, Main Profile   |
| Frame Rate         | Main Stream: 4MP (2688*1520), Max 30fps; 4MP (2560*1440), Max 30fps; 3MP (2304*1296), Max 30fps; 1080P(1920*1080), Max 30fps<br>Sub Stream: 720P (1280*720), Max 30fps; D1 (720*576), Max 30fps; 640*360, Max 30fps; 2CIF(704*288), Max 30fps; CIF(352*288), Max 30fps;<br>Third Stream: D1 (720*576), Max 30fps; 640*360, Max 30fps; 2CIF(704*288), Max 30fps; CIF(352*288), Max 30fps; |
| Video Bit Rate     | 128 Kbps-16 Mbps   |
| U-code             | Support  |
| OSD                | Up to 8 OSDs   |
| Privacy Mask       | Up to 4 areas  |
| ROI                | Up to 8 areas  |
| Video Stream       | Triple streams   |

## ILLUMINATOR

|                   |                           |
|-------------------|---------------------------|
| IR Range          | Up to 30m (98ft) IR range |
| Wavelength        | 850nm                     |
| IR On/Off Control | Auto/Manual               |

## IMAGE

|                         |  |
|-------------------------|--|
| White Balance           | Auto/Outdoor/Fine Tune/Sodium Lamp/Locked/Auto2                  |
| Digital noise reduction | 2D/3D DNR  |
| Smart IR                | Support  |
| Flip                    | Normal/Vertical/Horizontal/180°/90° Clockwise/90° Anti-clockwise |
| Dewarping               | N/A  |
| HLC                     | Supported  |
| BLC                     | Supported  |
| Defog                   | Digital Defog  |

## INTELLIGENT

|                            |  |
|----------------------------|--|
| Smart intrusion prevention | Support false alarm filtering: Cross Line detection, Intrusion detection, Enter Area detection, Leave Area detection |
| Statistical Analysis       | People counting, support people flow counting and crowd density monitoring   |

## EVENTS

|                  |   |
|------------------|---|
| Basic Detection  | Motion detection, tampering alarm, audio detection  |
| General Function | Watermark, IP address filtering, tampering alarm, access policy, ARP protection, RTSP authentication, user authentication |

## AUDIO

|                   |                |
|-------------------|----------------|
| Audio Compression | G.711U, G.711A |
| Audio Bitrate     | 64 Kbps        |
| Two-way audio     | Supported      |
| Suppression       | Supported      |
| Sampling Rate     | 8KHZ           |

## STORAGE

|                 |                       |
|-----------------|-----------------------|
| Edge Storage    | Micro SD, up to 256GB |
| Network Storage | ANR, NAS(NFS)         |



Precision Security Specialist

3306070265

<http://PSS.alibidealer.com>

# SPECIFICATIONS

## NETWORK

|                        |  |
|------------------------|--|
| Protocols              | IPv4, IGMP, ICMP, ARP, TCP, UDP, DHCP, RTP, RTSP, RTCP, DNS, DDNS, NTP, FTP, UPnP, HTTP, HTTPS, SMTP, SSL, QoS   |
| Compatible Integration | ONVIF (Profile S, Profile G, Profile T), API, SDK  |
| User/Host              | Up to 32 users. 2 user levels: administrator and common user   |
| Security               | Password protection, Strong password, HTTPS encryption, Export operation logs, Basic and digest authentication for RTSP, Digest authentication for HTTP, TLS 1.2, WSSE and digest authentication for ONVIF |
| Client                 | Alibi Vigilant CMS<br>Alibi Vigilant Toolbox<br>Alibi Vigilant Mobile  |
| Web Browser            | Plug-in required live view: IE9+, Chrome 41 and below, Firefox 52 and below<br>Plug-in free live view: Chrome 57.0+, Firefox 58.0+, Edge 16+   |

## INTERFACE

|                  |   |
|------------------|---|
| Audio I/O        | Input: impedance 35kΩ; amplitude 2V [p-p]<br>Output: impedance 600Ω; amplitude 2V [p-p] |
| Alarm I/O        | 1/1   |
| RS485            | N/A   |
| Built-in Mic     | Support   |
| Built-in Speaker | N/A   |
| WIFI             | N/A   |
| Network          | 10M/100M Base-TX Ethernet   |
| Video Output     | N/A   |

## CERTIFICATIONS

|             |  |
|-------------|--|
| EMC         | CE-EMC (EN 55032: 2015+A1:2020, EN 61000-3-3: 2013+A1: 2019, EN IEC 61000-3-2: 2019+A1: 2021, EN 55035: 2017+A11:2020)<br>FCC (FCC CFR 47 part15 B, ANSI C63.4-2014) |
| Safety      | CE LVD (EN 62368-1:2014+A11:2017)<br>CB (IEC 62368-1:2014)<br>UL (UL 62368-1, 2nd Ed., Issue Date: 2014-12-01)   |
| Environment | CE-RoHS (2011/65/EU;(EU)2015/863);<br>WEEE (2012/19/EU); Reach<br>(Regulation (EC) No 1907/2006)   |
| Protection  | N/A  |

## GENERAL

|                     |  |
|---------------------|--|
| Power               | DC 12V±25%, PoE (IEEE 802.3af)<br>Power consumption: Max 4.5W    |
| Power Interface     | Cable-free   |
| Dimensions (Ø x H)  | 109 x 62mm (Ø4.3" x 2.4")  |
| Weight              | 0.22kg(0.49lb)   |
| Material            | Metal + Plastic  |
| Working Environment | -30°C - 55°C (-22°F - 131°F), Humidity: ≤95% RH (non-condensing) |
| Storage Environment | -30°C - 55°C (-22°F - 131°F), Humidity: ≤95% RH (non-condensing) |
| Surge Protection    | 4KV  |
| Reset Button        | Supported  |



Precision Security Specialist

3306070265

<http://PSS.alibidealer.com>

# COMPATIBLE BRACKETS



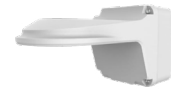
Junction Box  
Waterproof Joint



Fixed Dome Indoor Pendant  
Mount



Fixed Dome  
Junction Box



Fixed Dome Outdoor Wall Mount  
with Junction Box



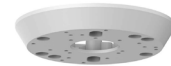
Fixed Dome Indoor/Outdoor  
Pendant Mount



Fixed Dome Indoor/Outdoor  
Pendant Mount



3in Electric-box Transfer Plate  
for Fixed Lens Camera



3in Electric-box Transfer Plate  
for Fixed Lens Camera (wide  
base)



Bullet & Dome Corner Mounting  
Bracket



Fixed Dome  
Indoor Incline Mount

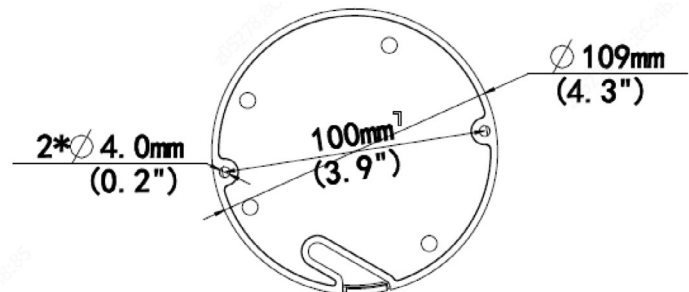
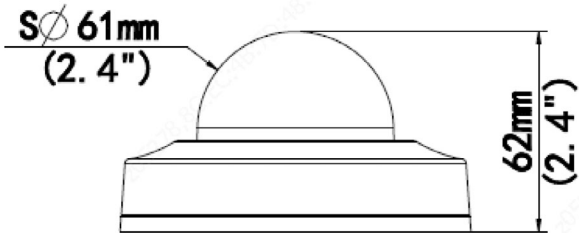


Pole Mount



4-inch Fixed Dome  
Indoor Wall Mount

# DIMENSIONS



Precision Security Specialist

3306070265

<http://PSS.alibidealer.com>