



VIGILANT PERFORMANCE SERIES



## ALIBI VIGILANT PERFORMANCE 5MP SMARTSENSE INTELLISEARCH FIXED IP DOME CAMERA

### Key Specifications:

- + 5MP high-resolution 2880 x 1620 @ 30fps
- + 2.8mm Lens
- + Smart IR up to 131 feet nighttime viewing
- + Color Attribute Collection
- + IntelliSearch™ Color Match Technology
- + Starlight technology - Color: 0.002Lux, 0 Lux with IR
- + Built-in Mic and Audio-Alarm 1 in/1 out
- + MicroSD, up to 256GB
- + ANR Network Storage, NAS (NFS)
- + Supports Ultra 265, H.265, H.264, and MJPEG
- + ONVIF (Profile S, Profile G, Profile T), API, SDK
- + Auto Scene Adjustment (intelligent WDR)
- + Up to 130dB true WDR (Wide Dynamic Range)
- + IK10 Vandal-Resistant and IP67 rating
- + Meets NDA federal government compliance requirements
- + One-click Cloud firmware updating

The Alibi Vigilant Performance Series, 5MP 131 feet IR Fixed Dome Camera delivers crisp video day or night. It also offers flexible storage solutions, with a built-in micro SD slot - enabling local storage up to 256GB.

- + **Multi-Megapixel Resolution Video** - 5MP resolution provides exceptional clarity and detail for most applications.
- + **IntelliSearch™ Color Match Technology** - Powerful camera analytics capture apparel colors and vehicle color and apply metadata to the video recording. Using powerful search algorithms, users can apply filters to quickly search for upper or lower garment color or vehicle exterior color significantly reducing the amount of time needed to search video footage.
- + **Smart Full-Frame IR = Better Video at Night** - Advanced full-frame illumination technology helps you capture up to 131 feet of nighttime video footage with more contrast and clarity.
- + **Color Attribute Collection** - Advanced technology collects the color information of the target with high accuracy for identification of a human's upper and lower garment, color of a vehicle, and upper garment color of the driver of a non-motor vehicle.
- + **Auto Scene Adjustment (intelligent WDR)** - Allows camera to easily and quickly improve image quality in high-contrast lighting conditions (foggy, backlit, flickering) and capture details in both areas of the video that are dimly and brightly lit.
- + **SmartSense technology** - utilizes AI deep learning developed data algorithms to identify human and vehicular targets with extreme accuracy and reduce false alarms.
- + **Starlight 2.0 Chipset Technology** - featuring an HD progressive scan CMOS sensor, capturing clear and vivid color images day or night - even in extremely dark environments.
- + **Lower Bandwidth and Storage Usage** - Ultra H.265 Compression technology reduces the video stream's overall requirements, saving you bandwidth and hard drive space.

**DRIVER**  
TECHNOLOGY

Driver Technology  
(601) 497-3450

<https://drivertechnology.alibidealer.com>

# SPECIFICATIONS

## CAMERA

Sensor	1/2.7", 5.0 megapixel, progressive scan, CMOS
Minimum Illumination	Colour: 0.002Lux (F1.6, AGC ON) 0 lux with IR on
Day/Night	IR-cut filter with auto switch (ICR)
Shutter	Auto/Manual, 1 - 1/100000s
Adjustment angle	Pan: 0° - 352° Tilt: 0° - 70° Rotate: 0° - 350°
WDR	130dB
S/N	>56dB

## LENS

Lens	2.8mm@F1.6	4.0mm@F1.6
Iris	Fixed	
Field of View (H)	110.71°	91.25°
Field of View (V)	56.39°	43.70°
Field of View (D)	95.35°	95.35°

## DORI

Lens (mm)	2.8	4.0
Detect (m)	63.0	90.0
Observe (m)	25.2	36.0
Recognize (m)	12.6	18.0
Identify (m)	6.3	9.0

## VIDEO

Video Compression	Ultra 265, H.265, H.264, MJPEG
H.264 code profile	Baseline profile, Main profile, High profile
Frame Rate	Main Stream: 5MP (2880*1620), Max 30fps; 4MP (2560*1440), Max 30fps; 3MP (2304*1296), Max 30fps; 1080P (1920*1080), Max 30fps; Sub Stream: 1080P (1920*1080), Max 30fps; 720P (1280*720), Max 30fps; D1 (720*576), Max 30fps; 640*360, Max 30fps; 2CIF(704*288), Max 30fps; CIF(352*288), Max 30fps; Third Stream: D1 (720*576), Max 30fps; 640*360, Max 30fps; 2CIF(704*288), Max 30fps; CIF(352*288), Max 30fps;
Video Bit Rate	128 Kbps-16 Mbps
U-code	Support
OSD	Up to 8 OSDs
Privacy Mask	Up to 4 areas
ROI	Up to 8 areas
Video Stream	Triple streams

## ILLUMINATOR

IR Range	Up to 40m (131ft) IR range
Wavelength	850nm
IR On/Off Control	Auto/Manual

## IMAGE

White Balance	Auto/Outdoor/Fine Tune/Sodium Lamp/Locked/Auto2
Digital Noise Reduction	2D/3D DNR
Smart IR	Support
Flip	Normal/Vertical/Horizontal/180°/90° Clockwise/90° Anti-clockwise
Dewarping	N/A
HLC	Support
BLC	Support
Defog	Digital Defog

## INTELLIGENT

Smart intrusion prevention	Support false alarm filtering: Cross Line detection, Intrusion detection, Enter Area detection, Leave Area detection
Recognition	Face capture
Statistical Analysis	People counting, support people flow counting and crowd density monitoring
Auto Scene Match (ASM)	Support (Only WDR)

## EVENTS

Basic Detection	Motion detection, Ultra motion detection, Tampering alarm, Audio detection
General Function	Watermark, IP address filtering, alarm input, alarm output, access Policy, ARP protection, RTSP authentication, user authentication

## AUDIO

Audio Compression	G.711U, G.711A
Audio Bitrate	64 Kbps
Two-way Audio	Support
Suppression	Support
Sampling Rate	8KHZ

## STORAGE

Edge Storage	Micro SD, up to 256GB
Network Storage	ANR, NAS(NFS)

# SPECIFICATIONS

## NETWORK

Protocols	IPv4, IPv6, IGMP, ICMP, ARP, TCP, UDP, DHCP, PPPoE, RTP, RTSP, RTCP, DNS, DDNS, NTP, FTP, UPnP, HTTP, HTTPS, SMTP, 802.1x, SNMP, QoS, RTMP,SSL/TLS, SSH
Compatible Integration	ONVIF (Profile S, Profile G, Profile T), API,SDK
User/Host	Up to 32 users. 3 user levels: administrator, common user and operator
Security	Password protection, Strong password, HTTPS encryption, Export operation logs, Basic and digest authentication for RTSP, Digest authentication for HTTP, TLS 1.2, WSSE and digest authentication for ONVIF
Client	Alibi Vigilant CMS Alibi Vigilant Toolbox Alibi Vigilant Mobile
Web Browser	Plug-in required live view: IE 10 and above, Chrome 45 and above, Firefox 52 and above, Edge 79 and above Plug-in free live view: Chrome 57.0 and above, Firefox 58.0 and above, Edge 16 and above

## INTERFACE

Audio I/O	Input: impedance 35kΩ; amplitude 2V [p-p] Output: impedance 600Ω; amplitude 2V [p-p]
Alarm I/O	1/1
RS485	N/A
Built-in Mic	Support
Built-in Speaker	N/A
WIFI	N/A
Network	1 * RJ45 10M/100M Base-TX Ethernet
Video Output	N/A

## CERTIFICATIONS

EMC	CE-EMC (EN 55032,EN 61000-3-3,EN IEC 61000-3-2,EN 50130) FCC (FCC 47 CFR part15 B)
Safety	CE-LVD (EN 62368-1) CB (IEC 62368-1) UL/CUL (UL 62368-1, CAN/CSA C22.2 No. 62368-1)
Environment	CE-RoHS (2011/65/EU;(EU)2015/863); WEEE (2012/19/EU)
Protection	IP67 (IEC 60529) IK10 (IEC 62262)

## GENERAL

Power	DC 12V±25%, PoE (IEEE 802.3af) Power consumption: 6.5W
Power Interface	Ø 5.5mm coaxial power plug
Dimensions (Ø x H)	111 x 83mm (Ø4.4" x 3.3")
Weight	0.42kg (0.93lb)
Material	Metal
Working Environment	-30°C - 60°C (-22°F - 140°F), Humidity: ≤95% RH (non-condensing)
Storage Environment	-30°C - 60°C (-22°F - 140°F), Humidity: ≤95% RH (non-condensing)
Surge Protection	4KV
Reset Button	Support
Web Client Language	20 Languages Traditional Chinese, English, Simplified Chinese, Polish, German, Russian, French, Korean, Dutch, Czech, Portuguese (Europe), Portuguese (Brazil), Japanese, Thai, Turkish, Spanish (Latin America), Spanish (Europe), Hungarian, Italian, Vietnamese

# COMPATIBLE BRACKETS



Junction Box  
Waterproof Joint



Fixed Dome Indoor  
Pendent Mount



Fixed Dome  
Junction Box



Fixed Dome Outdoor Wall  
Mount with Junction Box



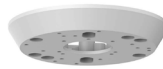
Fixed Dome Indoor/  
Outdoor Pendent Mount



Fixed Dome Indoor/  
Outdoor Pendent Mount



3in Electric-box Transfer  
Plate for Fixed Lens  
Camera



3in Electric-box Transfer  
Plate for Fixed Lens  
Camera (wide base)



Bullet & Dome Corner  
Mounting Bracket



Fixed Dome  
Indoor Incline Mount



Pole Mount



4-inch Fixed Dome  
Indoor Wall Mount

# DIMENSIONS

