



VIGILANT PERFORMANCE SERIES



ALIBI VIGILANT PERFORMANCE 4MP STARLIGHT 98 FEET IR IP DOME CAMERA

Key Specifications:

- + 4MP high-resolution, 2688 x 1520 @ 30fps
- + 2.8mm @ F1.6
- + Smart IR up to 98 feet nighttime viewing
- + Starlight technology - Colour: 0.003Lux, 0 Lux with IR
- + Audio-Alarm I/O
- + MicroSD, up to 256GB
- + ANR, NAS(NFS) Network Storage
- + ONVIF (Profile S, Profile G, Profile T), API
- + Up to 120dB true WDR (Wide Dynamic Range)
- + 3-axis
- + IK10 and IP67 rating
- + Meets NDAA federal government compliance requirements
- + One-click Cloud firmware updating

The ALIBI® Vigilant Performance Series, 4MP 98 feet IR Fixed Dome Camera delivers crisp video day or night. It also offers flexible storage solutions, with a built-in micro SD slot – enabling local storage up to 256GB.

- + **3D Digital Noise Reduction (DNR)** effectively filters noise to produce a crisper, clear video stream.
- + **IP67 weatherproof housing** - this dome camera delivers long-term durability even among extreme weather conditions such as rain, snow, and ice and has a wide temperature range of -22 degrees to 140 degrees Fahrenheit.
- + **Multi-megapixel resolution** – Get more detail from your video camera. This camera captures multi-megapixel high-resolution video footage that delivers crisp, precise detail and clarity for your video security needs.
- + **SmartSense technology** – utilizes AI deep learning developed data algorithms to identify human and vehicular targets with extreme accuracy and reduce false alarms.
- + **Starlight 2.0 Chipset Technology** – featuring an HD progressive scan CMOS sensor, capturing clear and vivid color images day or night – even in extremely dark environments.
- + **True Day/Night feature** – allowing you to capture better images in any lighting conditions.
- + **Full Frame Illumination with Smart IR** Smart full-frame illumination technology offers several advantages over standard IR for flawless night vision, including:
 - Clearer, brighter images in low light and at night
 - Reduces overexposure of the IR LEDs at the center of the image
 - Increases illuminant efficiency up to 30%
 - Produces LED light in rectangle form to better fit screen size
 - Captures images up to 98 feet in the dark without washing out the subject at closer ranges
 - Reduces video noise for a clearer nighttime picture and reduces bandwidth consumption and video storage requirements

SPECIFICATIONS

CAMERA

Sensor	1/2.7", 5.0 megapixel, progressive scan, CMOS	
Lens	2.8mm@F1.6	4.0mm@F1.6
Angle of View (H)	96.1°	78.7°
Angle of View (V)	55.3°	44.9°
Angle of View (O)	111.1°	89.2°
Adjustment angle	Pan: 3° - 360° Tilt: 0° - 68° Rotate: 3° - 360°	
Shutter	Auto/Manual, 1 - 1/100000s	
Minimum Illumination	Colour:0.003 Lux (F1.6, AGC ON) 0Lux with IR	
Day/Night	IR-cut filter with auto switch (ICR)	
Digital Noise Reduction	2D/3D DNR	
S/N	>56dB	
IR Range	Up to 30m (98ft) IR range	
Wavelength	850nm	
IR On/Off Control	Auto/Manual	
Defog	Digital Defog	
WDR	120dB	

DORI

Lens (mm)	2.8	4.0
Detect (m)	63.0	90.0
Observe (m)	25.2	36.0
Recognize (m)	12.6	18.0
Identify (m)	6.3	9.0

VIDEO

H.264 code profile	Ultra 265, H.265, H.264, MJPEG
H.264 code profile	Baseline profile, Main profile, High profile
Frame Rate	Main Stream:5MP (2880*1620), Max 25fps; 4MP (2560*1440), Max 25fps; 3MP (2304*1296), Max 25fps; 1080P (1920*1080), Max 30fps; Sub Stream: D1 (720*576), Max 30fps; Third Stream: CIF (352*288), Max 30fps
Video Bit Rate	128 Kbps-16 Mbps
OSD	Up to 8 OSDs
Privacy Mask	Up to 4 areas
ROI	Up to 8 areas
Motion Detection	Up to 4 areas

IMAGE

White Balance	Auto/Outdoor/Fine Tune/Sodium Lamp/Locked/Auto2
Digital Noise Reduction	2D/3D DNR
Smart IR	Support
Flip	Normal/Vertical/Horizontal/180°/90° Clockwise/90° Anti-clockwise
Dewarping	N/A
HLC	Supported
BLC	Supported

AUDIO

Audio Compression	G.711
Two-way audio	Supported
Suppression	Supported
Sampling Rate	8KHZ

STORAGE

Edge Storage	Micro SD, up to 256GB
Network Storage	ANR

NETWORK

Protocols	IPv4, IGMP, ICMP, ARP, TCP, UDP, DHCP, RTP, RTSP, RTCP, DNS, DDNS, NTP, FTP, UPnP, HTTP, HTTPS, SMTP, SSL, SNMP
Compatible Integration	ONVIF (Profile S, Profile G, Profile T), API
Client	Alibi Vigilant CMS Alibi Vigilant Toolbox Alibi Vigilant Mobile
Web Browser	Plug-in required live view: IE9+, Chrome 41 and below, Firefox 52 and below Plug-in free live view: Chrome 57.0+, Firefox 58.0+, Edge 16+, Safari 11+

INTERFACE

Audio I/O	Input: impedance 35kΩ; amplitude 2V [p-p] Output: impedance 600Ω; amplitude 2V [p-p]
Alarm I/O	1/1
Network	1 RJ45 10M/100M Base-TX Ethernet

SPECIFICATIONS

CERTIFICATIONS

CE: EN 60950-1
 UL: UL60950-1
 FCC: FCC Part 15

GENERAL

Power	DC 12V±25%, PoE (IEEE 802.3af) Power consumption: Max 4.5W
Dimensions (Ø x H)	108.7 x 81.1mm (Ø4.3" x 3.2")
Net Weight	0.425kg (0.93lb)
Material	Metal + Plastic
Working Environment	-30°C - 60°C (-22°F - 140°F), Humidity: ≤95% RH (non-condensing)
Storage Environment	-30°C - 60°C (-22°F - 140°F), Humidity: ≤95% RH (non-condensing)
Surge Protection	2KV
Ingress Protection	IP67
Vandal Resistant	IK10
Reset Button	Supported

COMPATIBLE BRACKETS



Junction Box
Waterproof Joint



Fixed Dome Indoor Pendant
Mount



Fixed Dome
Junction Box



Fixed Dome Outdoor Wall Mount
with Junction Box



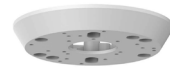
Fixed Dome Indoor/Outdoor
Pendant Mount



Fixed Dome Indoor/Outdoor
Pendant Mount



3in Electric-box Transfer Plate
for Fixed Lens Camera



3in Electric-box Transfer Plate for
Fixed Lens Camera (wide base)



Bullet & Dome Corner Mounting
Bracket



Fixed Dome
Indoor Incline Mount



Pole Mount



4-inch Fixed Dome
Indoor Wall Mount

DIMENSIONS

