



4.0 Megapixel

Alibi Cloud VS 4MP Starlight Varifocal IP Dome Camera

KEY FEATURES

- + 4MP resolution IP dome camera
- + 2.7-13.5mm motorized varifocal lens
- + Starlight chipset (.05 lux)
for color in low light
- + 100 feet Smart IR range
- + 98.5 ~ 27.8 degrees Field of View
- + Built-in micro SD slot - up to 256GB
- + True Wide Dynamic Range (WDR)
- + 3D Digital Noise Reduction (DNR)
- + Audio & Alarm i/o
- + IP66 Outdoor Rating
- + IK10 Vandal resistant rating
- + NDAA Compliant

The 4MP motorized Auto-Focus varifocal dome camera is built with a Starlight chipset to delivery crisp video day or night. This camera comes cloud-enabled to be used as part of the Alibi Cloud VS solution.

This product has been specifically designed and manufactured to comply with the latest technical requirements specified under NDAA regulations.

This security camera provides superior night vision infrared performance. It is built with a Starlight technology chipset to use ambient lights sources to produce color video at night. The camera features long-term durability against extreme weather conditions such as rain, snow, and ice and features a vandal resistant housing.

Multi-megapixel resolution - Get more detail from your video camera. This camera captures high-resolution video footage that delivers crisp, precise detail and clarity for your video security needs.

Full Frame Illumination with Smart IR Smart full-frame illumination technology offers several advantages over standard IR for flawless night vision, including:

Innovative Day/Night Scene Detection - includes a hardware sensor for smart software imaging that detects surveillance scene illumination. Designed to be water and dust-proof, this allows you to avoid unexpected costs of hardware failure.

3D Digital Noise Reduction (DNR) effectively filters noise to produce a crisper, clear video stream.

Specifications

CAMERAS

| | |
|-------------------------|--|
| Image Sensor | 1/2.8" Progressive Scan CMOS |
| Effective Pixels | 2592(H)×1520(V) |
| Electronic Shutter | Auto/Manual, 1/5 - 1/20,000s |
| Min. illumination | Color: 0.05 Lux @ (F1.2, AGC ON) , B/W: 0 Lux @ (IR LED ON) |
| S/N Ratio | 55dB |
| Day/Night | Auto(ICR) |
| Wide Dynamic Range | WDR |
| IR Range | Up to 30 m (98.4 ft) |
| IR On/Off Control | Auto/Manual |
| Pan/Tilt/Rotation Range | Pan: 0° ~ 355°, Tilt: 0° ~ 80°, Rotation: 0° ~ 355° |

LENS

| | |
|------------------|-----------------------------|
| Lens Type | Motorized focus |
| Iris Fixed | Iris |
| Focal Length | 2.7 ~ 13.5 mm |
| F Number | F1.6 |
| Angle of View H: | 98.5° ~ 27.8°, V: 71° ~ 20° |

VIDEO

| | |
|----------------------|---|
| Max. Resolution | 4MP (2592×1520) |
| Streaming Capability | 3 Streams |
| Stream/Frame Rate | Stream1: 2592×1520, 2560×1440, 2304×1296, 1920×1080, 1280×720 @ 25/30fps Stream2: D1, VGA, 640×360, CIF, QVGA @ 25/30fps Stream3: VGA, CIF, QVGA @ 25/30fps |
| Bit Rate Control | CBR/VBR |
| Bit Rate | Stream1: 100kbps-16Mbps Stream2: 10kbps-6Mbps Stream3: 10kbps-3Mbps |
| Image Enhancement | HLC / BLC / Anti-shake / WDR |
| White Balance | Auto |
| Gain Control | Auto/Manual |
| Noise Reduction | 2D/3D DNR |
| Smart IR | Support |
| Mirror | Support |
| Region of Interest | Off/On (8 Zone, Rectangle) |
| Motion Detection | Support |
| Privacy Masking | Support |

Specifications

AUDIO

| | |
|-------------|----------------------|
| Compression | G.711, RAW_PCM |
| Bit Rate | 8kbps, 16kps, 64kbps |

NETWORK

| | |
|---------------------|--|
| Protocols | IPv4/IPv6, 802.1x, HTTP, HTTPS, TCP/IP, UDP/IP, RTSP, DHCP, NTP, RTCP/RTP, PPPoE, SMTP, DNS, UPnP, FTP, ARP, SNMP, TLS/SSL |
| Interoperability | ONVIF, SDK, CGI |
| Streaming Method | Unicast |
| Max. User Access | 10 Users |
| Web Viewer | <IE11, Chrome, Firefox, Microsoft Edge |
| Management Software | Alibi Cloud VS |

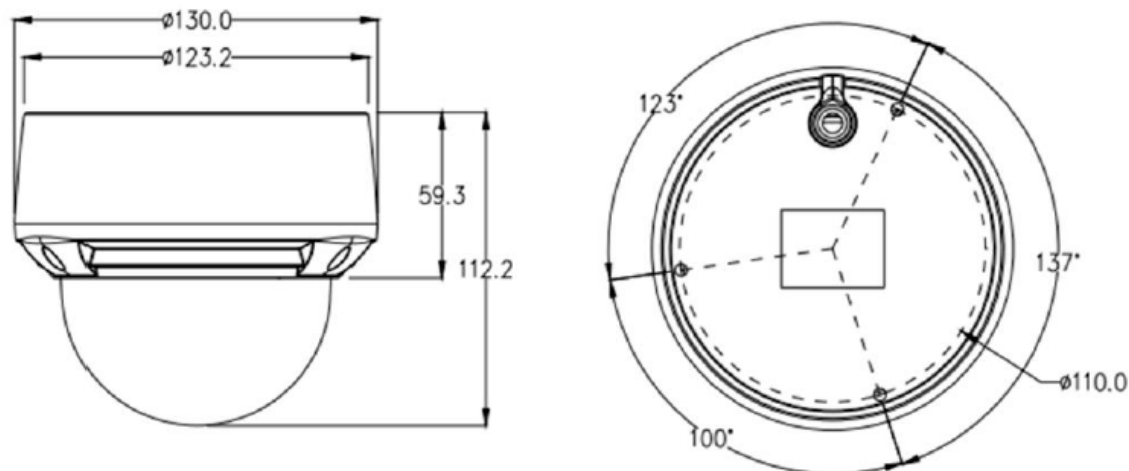
INTERFACE

| | |
|--------------|--|
| Ethernet | 1 Ethernet (10/100 Base-T) RJ-45 Connector |
| Audio | 1ch Input, 1ch Output |
| Alarm | 1ch Input, 1ch Output |
| Reset Button | Support |
| Storage | Built-in Micro SD slot, up to 256G |

ELECTRICAL

| | |
|-----------------------|-------------------------------|
| Power Supply | DC12V/POE (IEEE 802.3af) |
| Power Consumption | Max 8.5 W |
| Operating Temperature | -40°C ~ 55°C (-40°F ~ 131°F) |
| Operating Humidity | Less than 90% RH |
| Ingress Protection | IP66, IK10 |
| Certifications | CE/FCC |
| Casing | Metal |
| Dimensions | 130 × 112mm (5.12" × 4.41") |
| Net Weight | 0.8 kg (1.76 lb) |

Dimensions



Compatible Brackets



Round Back Box



Pole Mount for All Junction Box and Wall Mount



Corner Mount for All Junction Box and Wall Mounts



Wall Bracket with Back Box



Pendant Mount for Junction Box

Alibi Cloud VS is a cost-effective video surveillance solution that allows you to stream and retain video surveillance footage in an ultra-secure cloud environment. Powered by Eagle Eye Networks, a global leader in cloud video surveillance, Alibi Cloud VS is engineered to deliver cutting-edge reliability, scalability, and cyber-security.

Use the Alibi Cloud VS mobile application to view real-time videos, download footage or manage your solution. Ultra-secure, reliable and scalable – Alibi Cloud VS helps you protect your property with the latest cloud innovations.

The Alibi Cloud VS management dashboard is also available via web portal – no application needed to view and manage your camera to cloud solution on your computer or tablet.