



VIGILANT FLEX SERIES



ALIBI VIGILANT FLEX SERIES 5MP ILLUMINITE 131FT 4-IN-1 FIXED TURRET SECURITY CAMERA

Key Specifications:

- + 5MP resolution
- + .005 Lux Rating
- + TVI/AHD/CVI/CVBS
- + Built-in Microphone for high quality audio over coax
- + 1/2.7" CMOS Sensor
- + 2.8mm lens
- + 131 Feet - IllumiNite Distance
- + DWDR (Digital Wide Dynamic Range)
- + IP67 rating - withstands temps from -22 degrees to 140 degrees Fahrenheit
- + NDA Compliant

As part of the Alibi Vigilant Series, this 5MP 4-in-1 Fixed Turret Security Camera delivers crisp video day or night, providing HD-TVI/AHD/CVI/CVBS output for compatibility. Connect to any analog cameras on your network with one easy solution.

Protecting your home or business has never been easier – or more convenient. The 5MP HD-TVI turret security camera offers an impressive 131 feet, perfect for after-hours surveillance or anywhere you need to capture bright footage in dark conditions to protect your business. Whether it's 12pm or 12am, this versatile indoor/outdoor camera provides clear, crisp surveillance.

A 2.8mm wide-angle lens and Up the Coax (UTC) technology enables you to control the camera's onscreen display (OSD) from your web browser and the Alibi CMS or smartphone app.

- + **Multi-Megapixel Resolution Video** – 5MP resolution allows you to capture a high level of clarity and detail for most applications
- + **IP67 weatherproof housing** – this camera can handle long-term durability even among extreme weather conditions such as rain, snow, and ice.
- + **IllumiNite Technology featuring Starlight chipsets** – features an HD progressive scan CMOS sensor, capturing clear and vivid color images day or night – even in extremely dark environments.
- + **Multi-megapixel resolution** – Get more detail from your video camera. This camera captures high-resolution video footage that delivers crisp, precise detail and clarity for your video security needs.
- + **Innovative Day/Night Scene Detection** – includes a hardware sensor for smart software imaging that detects surveillance scene illumination. Designed to be water and dust-proof, this allows you to avoid unexpected costs of hardware failure.
- + **Intuitive interface** – everything you need to manage your system at your fingertips. With an intuitive interface and access to the free Alibi CMS and mobile app, system management has never been simpler.

CNY SECURITY SOLUTIONS LLC

3156555894

<http://CNY.alibidealer.com>

SPECIFICATIONS

SENSOR

Pixel	5MP
Size	1/2.7"
Minimum illumination	0.005lux (F1.4, AGC ON) 0 lux (white light on)

LENS

Lens	2.8mm	4.0mm
Lens mount	M12	
Angle of view	H: 111.5° V: 58.9° D: 134.8°	H: 89.6° V: 48.3° D: 106.4°

ILLUMINATOR

Illuminator	Two white-light illuminators
Illumination distance	40m
Lifetime	≥60,000 hours

VIDEO

Resolution	5MP@25fps: 2880(H)×1620(V); 5MP@20fps: 2592(H)×1944(V); 5MP@12.5fps: 2592(H)×1944(V) 4MP: 2560(H)×1440(V) 1080P: 1920(H)×1080(V)
Frame rate	TVI: 5MP@20fps (default), 5MP@12.5fps, 4MP@30fps, 4MP@25fps, 1080P@30fps, 1080P@25fps AHD: 5MP@20fps, 4MP@30fps, 4MP@25fps, 1080P@30fps, 1080P@25fps CVI: 5MP@25fps, 4MP@30fps, 4MP@25fps, 1080P@30fps, 1080P@25fps CVBS: PAL, NTSC
Shutter time	PAL: 1/25s-1/50000s NTSC: 1/30s-1/50000s

IMAGE

Exposure mode	Four modes: Global (default), BLC, HLC, DWDR
Day/Night	24/7 color images
Digital noise reduction	2D
White balance	Two modes: Auto (default), Manual
WDR	DWDR
Flip	Supports 180° horizontal flip, 180° vertical flip

AUDIO

Microphone	Built-in Mic
Camera audio	TVI: 5MP@20fps, 5MP@12.5fps, 4MP@30fps, 4MP@25fps, 1080P@30fps, 1080P@25fps CVI: 5MP@25fps, 4MP@30fps, 4MP@25fps

INTERFACE

Power	5.5mm power interface
Video output	BNC, supports TVI/AHD/CVI/CVBS

OPERATING ENVIRONMENT

Temperature	-30°C to 60°C (-22°F to 140°F)
Humidity	≤95% (RH, non-condensing)
Surge protection	4kV
Ingress protection	IP67

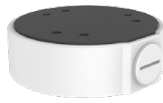
GENERAL

Power	DC12V (±25%), with reverse polarity protection and surge protection. Max 3.28W
Mount	Surface mount (default), optional junction box and wall mount bracket
Dimensions	111mm*96mm (diameter*height)
Material	Metal and plastic
Weight	356g (0.79lb)
Certification	CB, CE, FCC, UL

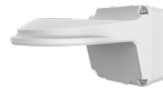
COMPATIBLE BRACKETS



Junction Box
Waterproof Joint



Fixed Dome
Junction Box



Fixed Dome Outdoor Wall Mount
with Junction Box



Bullet & Dome Corner Mounting
Bracket



Pole Mount



4-inch Fixed Dome
Indoor Wall Mount

DIMENSIONS

